



## 2 DAY SAFARI TSAVO WEST

### DAY 1

06:00 Pick up from your hotel and drive to Tsavo West National Park. Tsavo West together with Tsavo East form the biggest National Park in Kenya – more than 22,000 km<sup>2</sup>. Tsavo West is famous for its diversity. Here you will find beautiful rolling hills, rivers, lakes, caves and forests. During Game Drives you will have chance to visit Mzima Springs and have a walk to the underwater observation point to see the different fish species, crocodiles and hippos. The Shetani Lava Flow is just a stone throw away, a result of volcanic activity in the Chyulu hills just a few hundred years ago.

Tsavo East is also home to the last strong hold of Black rhinos in the wild. It has a fortified and guarded rhino sanctuary which is approximately 90 km<sup>2</sup>. Visit to the sanctuary is free and available starting 16:00 – 18:00.

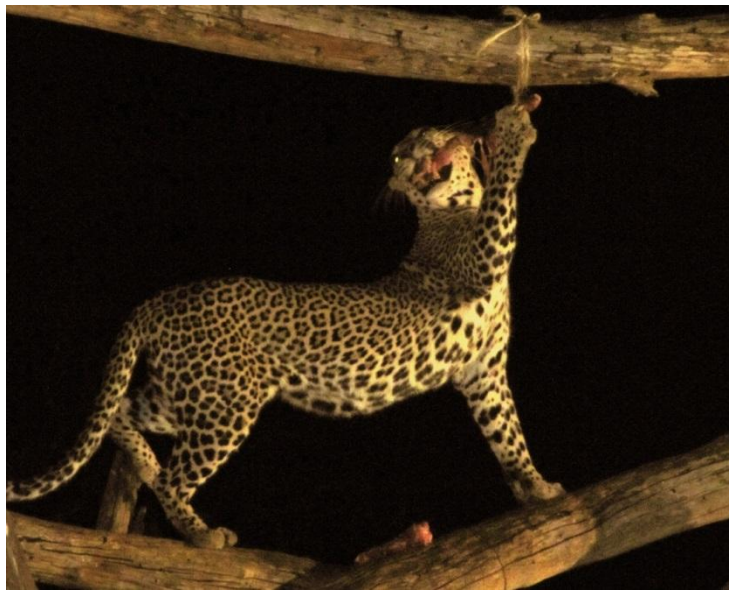
Once in the Park we begin the Game Drive with an experienced guide-driver who will help you search for animals based on his experience as well as contacting other drivers through CB Radio or mobile phone.

12:00 - 13:00 arrive at Ngulia Safari Lodge for buffet lunch and room check-in. After lunch there will be some time to relax admire the amazing panorama.

16:00 when temperatures drop, the animals become more active making it an ideal time for another Game Drive. You will be looking for animals and

admiring the views until 18:00 ~ 18:30 (it is not allowed to drive in the Park after dark).

Dinner and overnight stay in the lodge/camp. Possibility to observe animals from the lodge terrace which has a view overlooking the waterhole. There is usually a bait set out by the lodge staff and with a bit of luck you will see the leopard from the lodge terrace while it is having a treat.



## DAY 2

We wake up early in the morning to leave for a Game Drive at 06:00. There is tee/coffee available in the lodge before the drive. This is an awesome time to be out in the wild before the animals retreat into the shades before the heat intensifies as the day progresses. Best time to take photographs.

08:00-09:00 breakfast in the lodge.

09:00 - 10:00 Check out from the lodge/camp and last game drive before we start driving out of the park and heading back to your hotel in Mombasa.

There is a possibility of visiting Masai Village on the way back.

### **WHAT TO TAKE:**

- SUN PROTECTION CREAM
- HAT/CAP
- SUN GLASSES
- ANTI MOSQUITO/INSECT REPELLANT
- COMFORTABLE, LIGHT CLOTHES AND SHOES
- LONG SLEEVE TROUSERS AND JACKET FOR EARLY MORNING AND EVENING DRIVES
- CAMERA
- SPARE BATTERIES
- BINOCULARS



### **PRICE INCLUDES:**

- PARK FEE
- TRANSPORT IN A MINI VAN WITH A POP-UP ROOF FROM AND BACK TO THE HOTEL
- DRIVER-GUIDE ASSISTANCE
- WATER IN THE CAR 0,5 L. PER PERSON
- FULL BOARD ACCOMMODATION IN THE LODGE (LUNCH AND DINNER ON DAY 1 AND BREAKFAST ON DAY 2)

**PRICE DOES NOT INCLUDE:**

- DRINKS AT LUNCH AND DINNER
- MASAI VILLAGE VISIT (20 USD)
- TIP FOR A DRIVER WHO HELPS US TO SPOT THE ANIMALS
- PERSONAL AND HEALTH INSURANCE  
(POSSIBLE TO BUY AT EXTRA CHARGES)

[info@nativestoursandtransfers.co.ke](mailto:info@nativestoursandtransfers.co.ke)

+254 727902926